



soundleisure

Connecting a Sound Leisure Online jukebox to the internet

Contents

1. Introduction
2. Wiring CAT 5 Cables
3. Pre Installation Checklist
4. Equipment Checklist
5. Connecting the Jukebox to the Router/Modem
6. Installation Procedure - HARWARE
7. Installation Procedure - SOFTWARE

For additional help or information please contact Sound Leisure's
Digitech department on:

ph: 0845 2301775
email: digitech@soundleisure.com



Introduction

Sound Leisure's Online Music Delivery System allows music updates to be delivered to the jukebox via an ADSL internet connection and gives remote management capabilities to the site operator.

Before a machine can be registered on the Sound Leisure Online server, a 'Server Registration Code' must be issued. This should be delivered with your Online Jukebox and must be entered as part of the installation process.

This document contains important information about the type of hardware required to connect the jukebox to the Sound Leisure server, the tools and information required to install the jukebox and how to make the connection between the jukebox and various bits of hardware.

It also contains a Pre Installation Check List which should be retained by the operator for future reference



Sound Leisure's
Top Of The Pops
online jukebox

For additional help or information please contact Sound Leisure's
Digitech department on:

ph: 0845 2301775
email: digitech@soundleisure.com

WIRING CAT 5 CABLES

In order to install an Online system the jukebox must be connected to a modem/router which allows the PC to be connected to the internet through the ADSL enabled telephone line.

In ALL SITUATIONS the jukebox PC will need connecting to the modem/router via a STRAIGHT THROUGH CAT5 CABLE. These can be purchased pre made to your required length from Sound Leisure, or can be made using your own equipment.

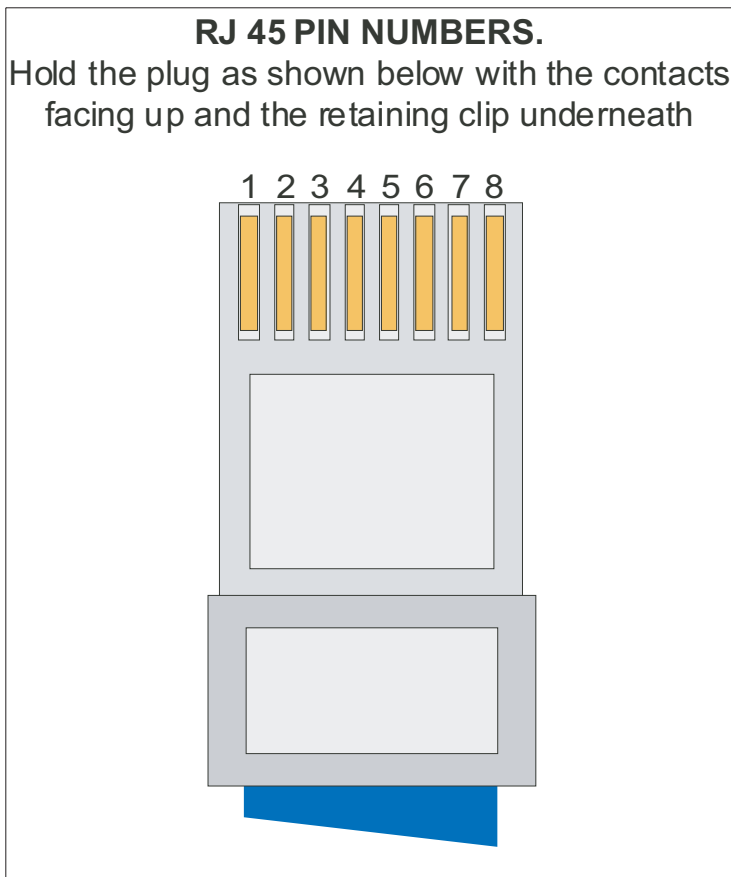
Please adhere strictly to the following guidelines if you are preparing or terminating your own CAT5 cables.

Use dedicated 8 CORE CAT 5 cable only
(For example, Two lengths of 4 core cable will not work)









Avoid Running CAT5 cables along side Mains power cabling and flourescent tube lighting units

CAT5 cables MUST be wired exactly as shown on the right

CAT 5 relies on twisted pairs of cables to maintain signal strength. Arranging the individual wires in ANY alternative combinations will result in poor signal quality or total loss of signal quality, under which circumstances the jukebox will not connect to the secondary device



STRAIGHT THROUGH CAT5 CABLE

Pin Number	1	2	3	4	5	6	7	8
Pin Colour	o/w	o	g/w	bl	bl/w	g	br/w	b
								
Pin Number	1	2	3	4	5	6	7	8

PRE-INSTALLATION CHECKLIST

Site Name: _____

Site Address: _____

Site Tel: _____

JUKEBOX
SERIAL No: _____

REQUIRED INFORMATION BEFORE GOING TO SITE:

(write details in the spaces provided)

Site ADSL Service Provider: _____ Tel: _____

Is an ADSL modem issued by the provider?

yes	no
<input type="checkbox"/>	<input type="checkbox"/>

Has the ADSL line been activated?

yes	no
<input type="checkbox"/>	<input type="checkbox"/>

If no, date ADSL will be activated on:

____ / ____ / ____

Site ADSL Telephone number: _____

(This is required to identify the right BT socket when you get to site as there may be more than one phone line.)

ADSL Account login details:
(supplied by the ADSL service provider)

User name: _____

Password: _____

Sound Leisure Server registration code: _____
(supplied by Sound Leisure)

IT IS IMPOSSIBLE TO INSTALL AN ONLINE JUKEBOX WITHOUT THE ADSL ACCOUNT USERNAME AND PASSWORD AND A REGISTRATION CODE FROM SOUND LEISURE

ADDITIONAL INFORMATION

Once the ADSL has been activated on a telephone line, normal phone equipment such as telephones and faxes must be fitted with a MICRO FILTER. This enables telephones and faxes to be used simultaneously with the ADSL line, ensuring phone calls and faxes can still be received and sent when the jukebox is online. Use the section below to record the number of MICRO FILTERS required for this installation:

Number of phones on ADSL line?

Number of faxes on ADSL line?

Other standard devices on ADSL line?

TOTAL MICRO
FILTERS REQUIRED



EQUIPMENT CHECKLIST

ESSENTIAL EQUIPMENT FOR INSTALLATION

BASIC TOOLS

Screwdrivers (flat and philips)
Wire Cutters
Staple gun

HARDWARE AND CABLES

Keyboard
Micro-filters
4 way mains extension lead
(To plug the router into - there's never a spare plug!)

Telephone extension lead
(In case the BT socket is located in an unsuitable place. Sound Leisure recommends using an RJ11 data compatible extension lead rather than a standard phone extension lead as this gives better ADSL performance.)

CAT5 cables or equipment to make up cables (see above right)

(optional)

CAT 5 CABLING EQUIPMENT

RJ45 connectors
RJ45 Crimping tool
CAT5 Cable Tester
Wiring Diagram

(Consult the 'Wiring CAT 5 cables' info sheet for instructions on producing CAT 5 cables. This can be downloaded from the Digital section of Sound Leisure's 'Support' pages, online at www.soundleisure.com)

YOU WILL ALSO REQUIRE EITHER A ROUTER OR COMBINED ROUTER/MODEM

Has the ADSL service provider supplied a ADSL modem ?

NO

you will require

A combined ADSL modem/router

Sound Leisure recommends:

BT Voyager 240

Order part number ?????-??
£60.00 (+VAT) from Sound Leisure.

YES

you will require

A DSL Router

Sound Leisure recommends:

Linksys EtherFast Cable DSL

Order part number 60604-34
£50.00 (+VAT) from Sound Leisure.

CONNECTING THE JUKEBOX TO THE ROUTER / MODEM

The equipment and cables required to connect a SoundLeisure Online jukebox to the internet will vary depending on how many of the components have been supplied by the ADSL service provider.

IF AN ADSL MODEM HAS BEEN SUPPLIED BY THE SERVICE PROVIDER

Please follow wiring diagram 1 on the right hand side.
You will also need a router:

Sound Leisure recommends the following:
Linksys EtherFast Cable DSL
Order part number 60604-34
£50.00 (+VAT) from Sound Leisure.

IF NO ADSL MODEM HAS BEEN SUPPLIED BY THE SERVICE PROVIDER

Please follow wiring diagram 2 on the right hand side.
You will also need a combined ADSL modem/router:

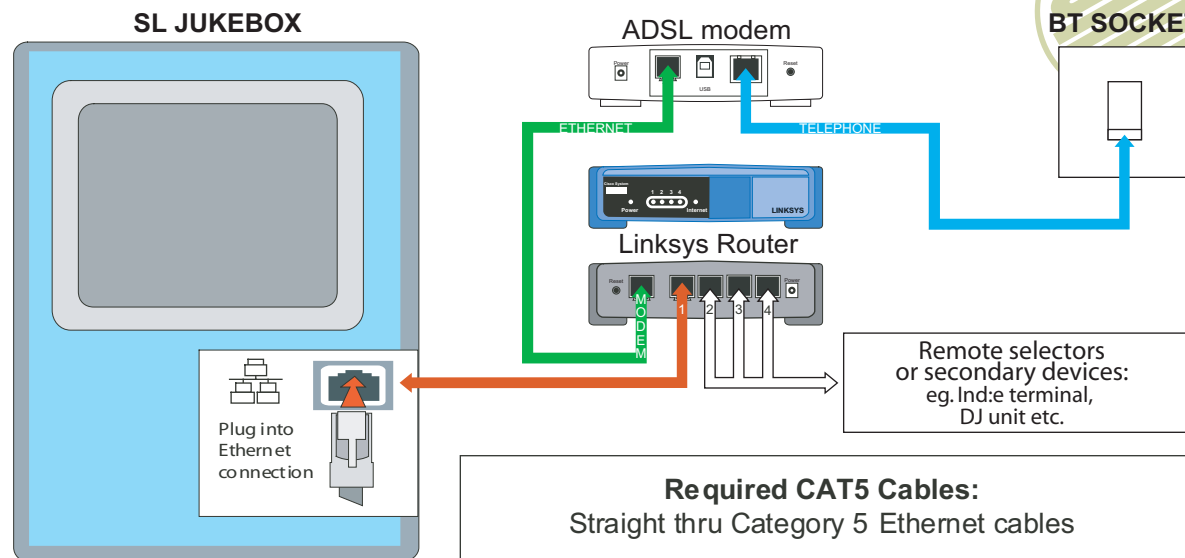
Sound Leisure recommends the following:
BT Voyager
Order part number 60604-240
£60.00 (+VAT) from Sound Leisure.

IMPORTANT NOTE

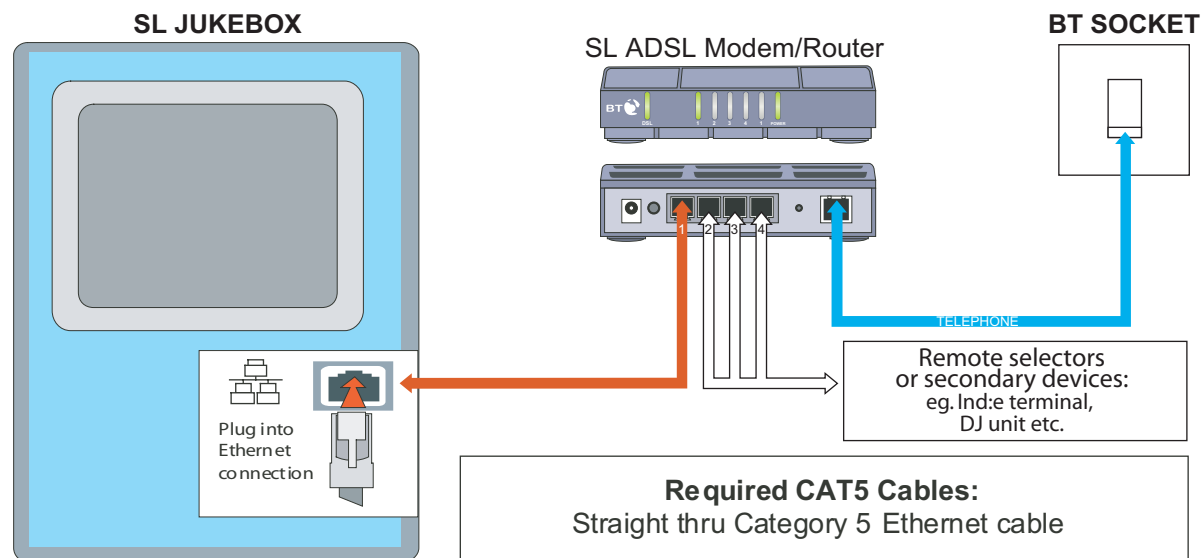
CAT 5 cables MUST be made up exactly as detailed in the 'Wiring CAT 5 cables' info sheet.

CAT 5 relies on twisted pairs of cables to maintain signal strength, connections in any other configuration will not work!

1. IF THE ADSL MODEM HAS BEEN PROVIDED BY THE SERVICE PROVIDER.



2. IF YOU ARE USING THE MODEM/ROUTER RECOMMENDED BY SOUND LEISURE.



INSTALLATION PROCEDURE

Hardware Installation

1 Locate the BT phone socket that the ADSL has been activated on.
(The telephone number is normally written on the phone socket.)

2 Ask if the phone line has additional extensions running to other locations in the site.
Pick the best location from all the extensions to locate the modem/router which will be used by the jukebox.

Ensure the Modem/Router is located away from public access.
It may be essential to run a telephone extension line to ensure the hardware can be safely mounted behind the bar or in a managers office etc.

3 Ensure In-Line Micro Filters are inserted between any additional sockets and devices (i.e. between the BT socket and telephone) All devices (telephones /Faxes etc) used on the ADSL phone line MUST be fitted with in-line Micro Filters.

4 Plug the ADSL modem / router into the phone line via a micro-filter.

5 Connect a CAT5 straight through cable from the ADSL modem/Router to the Jukebox.
Refer to the 'Connecting the Jukebox to the Modem/Router' diagram for detailed information about making the correct connections.

6 Connect a keyboard to the Jukebox then reset the jukebox.

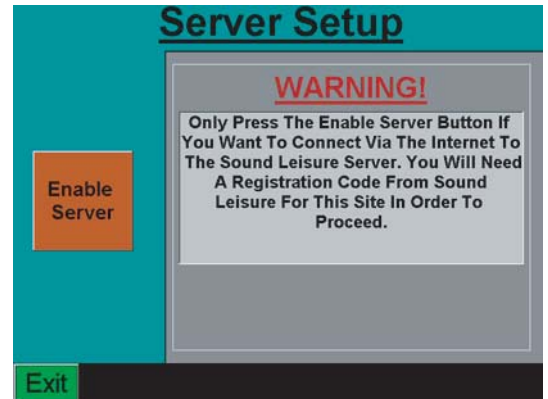
Proceed to the software setup

INSTALLATION PROCEDURE

Software Setup 1/7

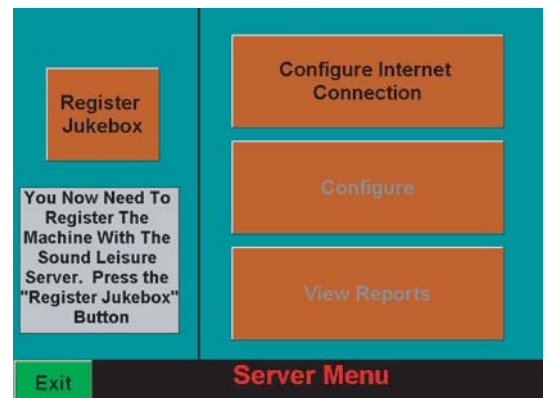
1. When the jukebox has rebooted install the latest program version.
2. From the engineers menu locate the 'Server' option and select it. The following screen will appear.

Touch the 'Enable Server' Button by touching it on screen.



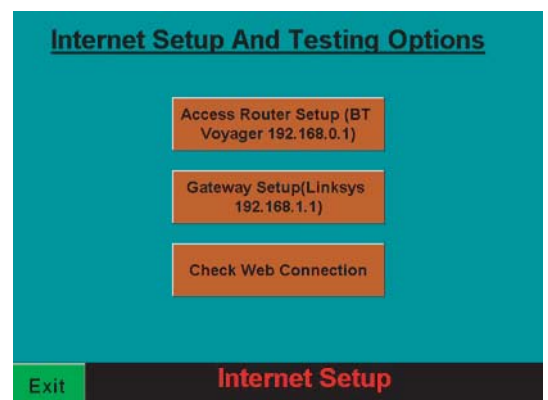
3. You will be asked to confirm if you wish to enable the server. Press 'continue', 'Yes' and 'Continue' again to open the server menu.
4. The Server Menu will appear as shown here.

Select the 'Configure Internet Connection' option by touching it on screen.



5. The 'Internet Setup And Testing Options' page will appear.

By default the ADSL / DSL modem will be assigned to one of two addresses, which can be accessed by pressing the top two buttons on the page.



INSTALLATION PROCEDURE

Software Setup 2/7

6. Press the top button (marked 192.168.0.1)

If the modem cannot be found on this address the 'page cannot be displayed' message will be displayed, as shown on the right:

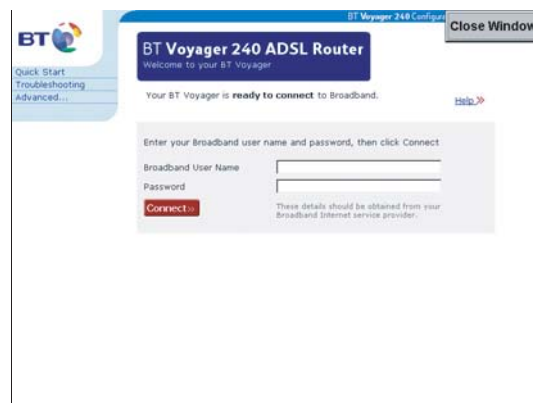
Press the close button to return to the 'Internet Setup And Testing Options' page and try the second button (marked 192.168.1.1)



7. Once the modem has been located you must enter into it the Username and Password supplied by the ADSL service provider. This is verified each time the computer connects to the internet.

The way in which these details are entered into the modem will differ from manufacturer to manufacturer. Consult the documentation supplied with your modem for further information.

The illustration on the right shows an example of the setup page of the BT modem recommended by Sound Leisure.



Once the username and password has been entered press the 'Close Window' button to return to the jukebox menu.

8. Now select 'Check Internet Connection' button by touching it on screen.

The jukebox will now log the internet using the username and password details you have entered. If the details are correct the jukebox will display a test page from the Sound Leisure server, as shown on the right.



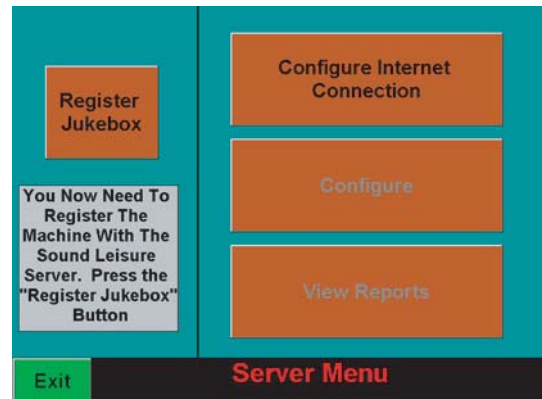
If the jukebox cannot connect to the server a 'page cannot be displayed' message will be displayed. (as shown on point 6.) In this situation contact the ADSL supplier and confirm the username and password details are correct, then re-enter them into the router as described in points 5 - 8.

pto

INSTALLATION PROCEDURE

Software Setup 3/7

9. Return to the main 'Server Menu' shown on the right and select 'Register Jukebox' by touching it on screen.

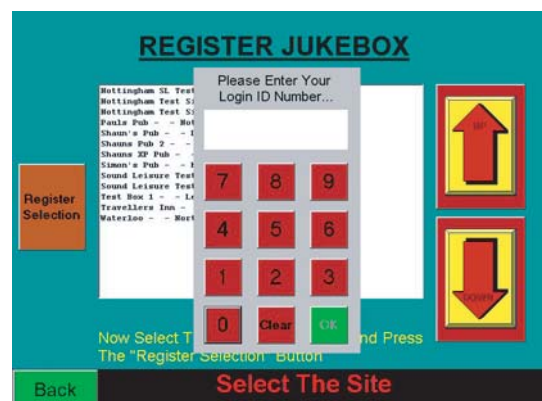


10. The jukebox will now attempt to log onto the Sound Leisure server to retrieve a list of online jukebox sites, as shown below.



11. Select the site name that refers to the current installation by touching it on screen. When selected the site will be highlighted in white text with a blue background.

Now press the 'Register Selection' button. After a short pause a Keypad will appear on screen as shown on the right.



Use this keypad to enter the 'Server Registration Code' supplied by Sound Leisure and press the 'OK' button to confirm the code.

INSTALLATION PROCEDURE

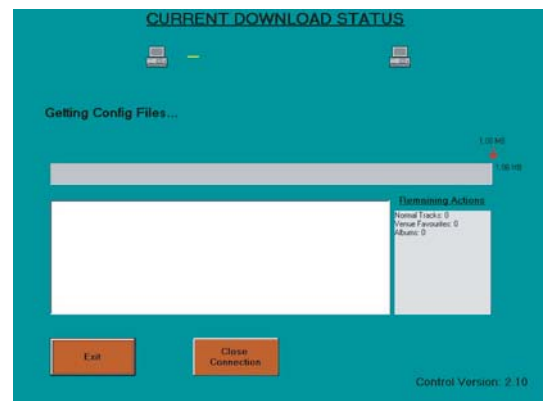
Software Setup 4/7

12. If your code is incorrect you will see the screen shown on the right 'Your code was incorrect. Please ensure you selected the correct site name and entered the correct code!'

In this situation ensure you selected the correct site name from the list then check and re-enter the 'Server Registration Code'.



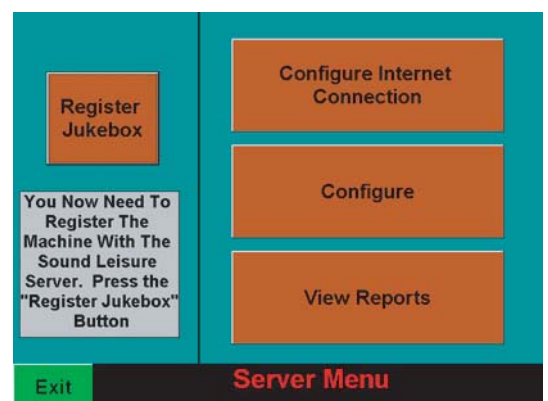
13. Once you have entered the correct code you will receive a 'Welcome to the Network' message as shown below left. Press the 'OK' button to complete the registration. The jukebox will now automatically log onto the Sound Leisure server for the first time, displaying the download progress bar as shown below right.



14. Once the initial correspondence is complete the jukebox will return to the main 'Server Menu' shown on the right.

You must now manually enable the 'Top 40' and 'pre Release' category's.

To do this select the Configure option by touching it on screen.

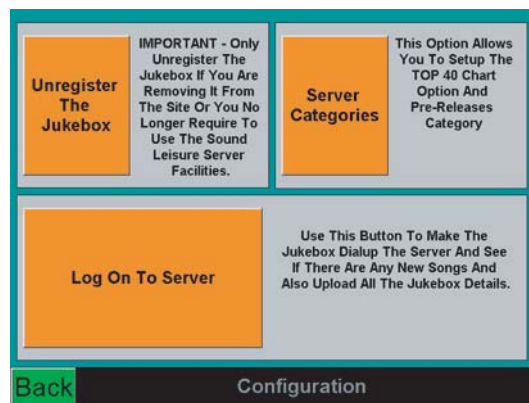


INSTALLATION PROCEDURE

Software Setup 5/7

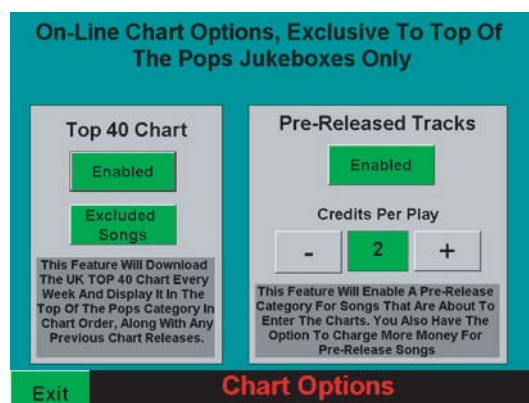
15. The jukebox is now configured to receive remote updates to its core categories using Sound Leisure's 'Intelligent Music Management System' (IMMS) which analyses the jukebox play history to automatically select the most appropriate tracks for the site.

To set up the additional online categories select the 'Server Categories' option by touching it on screen.



16. Touch the 'Enable' button on the 'Pre Release' option. Once enabled the button will change from red to green. Exclusive Pre-Release tracks will be downloaded from the Sound Leisure server into the Pre-Release category, before they are released for sale to the general public.

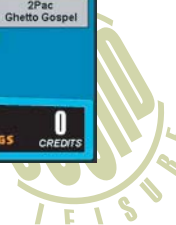
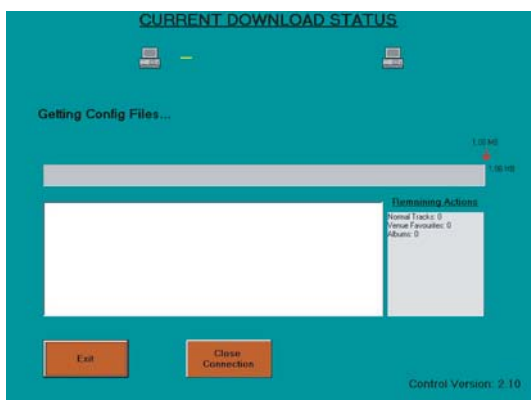
As this is a 'value added' service the number of credits required to play a Pre-Release track can be increased using the 'Credits Per Play' option.



Touch the +/- buttons to increase or decrease the number of credits required. The amount of money required for a single credit is determined by the main jukebox 'price of play' settings (i.e 1 = 30. 2 = 50. 5 = £1.) The 'excluded songs' option is covered in point XX. Ignore this for the time being and press the 'Exit' button.

17. The Jukebox will now automatically log onto the Sound Leisure server and start to download the current 'Top 40' and any 'Pre Release' tracks available. Each track downloaded has an individual progress bar as shown below left.

Leave the jukebox to download a few tracks then press the 'exit' button and return to the customer interface. The 'Top Of The Pops' category will be enabled and some of the tracks will be displayed, as shown below right. Tracks waiting to be downloaded will display a 'Available Soon' logo until the track is received.

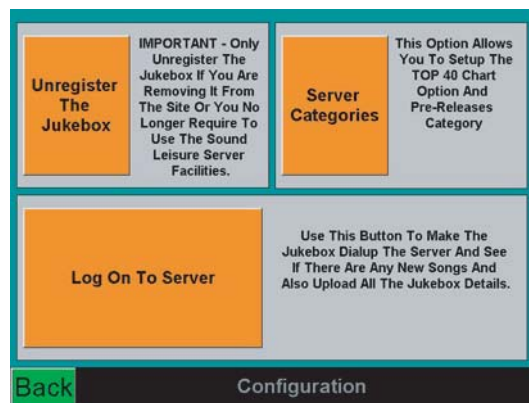


INSTALLATION PROCEDURE

Software Setup 6/7

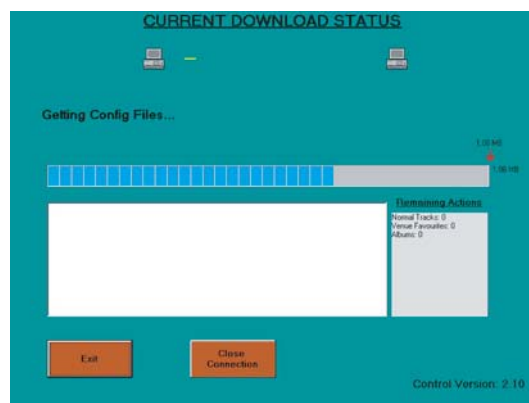
18. Reset the Jukebox via the mains switch. When it has rebooted goto the engineers menu and locate the 'server' main page, then select 'Configure'.

Select 'Log On To Server' by touching it on screen.



19. The jukebox should log onto the Sound Leisure server and continue downloading the track which it was receiveing at the point it was reset. You can confirm this as the progress bar will appear to start part way through, as shown on the right.

The position of the progress bar will differ depending on how much of the current track had downloaded at the point the machine was reset.



Press the exit button to return to the 'Configuration' screen.

20. Select 'Server Configuration' then 'Excluded Songs'. The screen below is displayed.

21. 'Pre-release' and 'Top 40' categories are regularly updated from the internet, therefore any tracks deleted from the jukebox would be downloaded when the jukebox next connected to the server. If a track needs to be permanently removed from either the 'Pre-release' or 'Top 40' categories, it must be excluded using the 'Excluded Songs' option.

All current tracks in both 'Top 40' and 'Pre Release' categories are displayed. To permanently remove a track select it by touching it on screen, once selected it will appear with white text on a blue background.

Select the 'Toggle Enable - Disable' button by touching it one screen. The 'status' column will change from 'enabled' to Disabled'.

The track will NOT be available on the customer interface and will not be downloaded during future sessions.



INSTALLATION PROCEDURE

Software Setup 7/7

22. The installation of the jukebox is now complete. The jukebox will continue to download the remaining 'Top 40' and 'Pre Release' tracks.

This may take up to 1 hour for the initial download as the entire content of the online categories must be downloaded. Regular updates will be much breifer as fewer tracks are downloaded.



After this download is complete both the 'Top 40' and 'pre Release' categories will be populated with tracks and should appear as shown on the right.



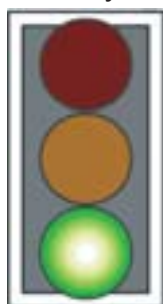
Keeping Track Of When The Jukebox Logs On.

Your online jukebox should log onto the server every day and there are several ways to check when it has connected and what action it has performed. The jukebox retains detailed logs of all its attempted connections and the tracks which were downloaded. These can be viewed by opening the 'Server' page from the engineers menu and selecting 'view reports'.

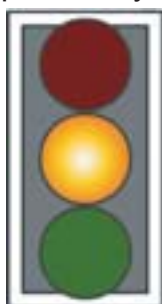


To quickly check when the jukebox has most recently connected to the server use the 'traffic light' icon on the A-Z Options page of the customers interface. The traffic lights have 4 possible states:

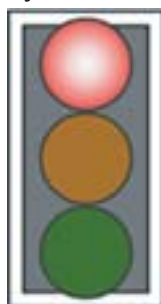
Machine logged on today



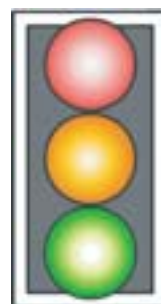
Machine logged on in past 3 days



Not logged on for 3 days or more



Jukebox logged on and downloading now



INSTALLATION PROCEDURE

Engineer Notes

